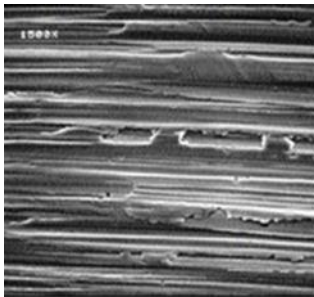


Max EZ

HIGH-PERFORMANCE POWER STEERING FLUID

Royal Purple[®] Max EZ[®] is an advanced power steering fluid designed to maximize the life and performance of all power steering units. Max EZ is formulated with a blend of select synthetic base oils plus Royal Purple's proprietary Synerlec[®] additive technology, which is proven to make equipment run cooler, longer, quieter and more efficiently. Max EZ[®] is recommended for use in any automotive hydraulic power steering system, but excels in severe applications such as dedicated track cars and off-road applications with large, aggressive tires. Also, Max EZ[®] is compatible with and can be mixed with any OEM or stock replacement power steering fluid, and has excellent seal compatibility.

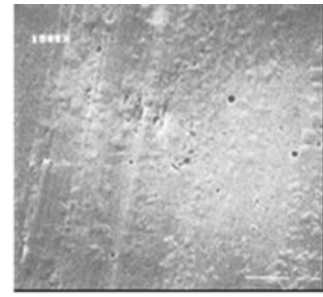
Royal Purple's advanced and proprietary Synerlec[®] technology provides an exceptional film strength increase compared to any other comparable lubricant. The protection provided by Synerlec[®] dramatically reduces metal-to-metal contact and frictional wear, helping to extend power steering system component life and reduce parasitic power loss. Synerlec[®] also provides the lubricant with outstanding oxidation resistance to increase lubricant useful life and safely extend oil drains. The ionic attraction of Synerlec[®] to metal components provides unmatched wear protection, even before the oil is fully circulating.



New Bearing*



After Leading Synthetic*



After Royal Purple
w/ Synerlec*

PERFORMANCE ADVANTAGES

- GREATER WEAR PROTECTION - Prevents wear of hydraulic and steering system components beyond OEM spec. requirements
- REDUCED TEMPERATURES – Superior separation of metal surfaces and greater lubricity reduces friction and heat generation
- EXCELLENT ANTI-FOAMING – Advanced chemistry helps prevent foam generation and quickly reduce any foam that is created
- SUPERIOR CORROSION PROTECTION - No rust observed in standard industry testing
- OUTSTANDING HIGH TEMPERATURE PERFORMANCE – Maintains viscosity and long fluid life even under severe operating conditions, like off-road operation and heavily loaded vehicles
- INCREDIBLE LOW TEMPERATURE FLOW – With a Pour Point below -40 degrees, power steering will operate properly even on the coldest days



TECHNICAL DATA SHEET

Typical Physical Properties		
Property	Test Method	
Viscosity @ 40°C, cSt	ASTM D445	48
Viscosity @ 100°C, cSt	ASTM D445	8.5
Viscosity Index	ASTM D2270	153
Flash Point, °C (°F)	ASTM D92	204 (400)
Pour Point, °C (°F)	ASTM D97	-43 (-45)
Rust Prevention, Dist. Water	ASTM D665A	PASS
Rust Prevention, Sea Water	ASTM D665B	PASS
Copper Corrosion @ 100°C	ASTM D130	1A
Copper Corrosion @ 150°C	ASTM D130	1A
Foam Stability, Seq. II	ASTM D892	0/0
4-Ball Wear, Scar, mm	ASTM D4172	0.47

To the best of our knowledge, the information contained herein is accurate, but is given without warranty or guarantee. We assume no liability whatsoever for the accuracy or completeness of the information contained herein. Final determination of the suitability of any information or material for the use contemplated, the name of use and whether there is any infringement of patents is the sole responsibility of the user.

© 2020 Calumet Specialty Products, LLC. All Rights Reserved.

Distributed By Calumet Branded Products, LLC | 2780 Waterfront Pkwy, E. Dr., Suite 200 | Indianapolis, IN 46214 | Technical Services: 888-382-6300 | www.royalpurple.com

2/5/2021